

ATRN Newsletter



this issue

2018 ATRN Health Summit Debrief	1
ATRN Summit Poster Session Winners	2
Ohio University	3
University of Kentucky	4
Ohio University	5
Funding Opportunity	6
Upcoming Events	7

2018 ATRN Health Summit Debrief



Pictured (L-R): ATRN Executive Leadership Members Erin Haynes, DrPH, MS (Past Chair), Gia Mudd-Martin, PhD, MPH, RN, FAHA (Chair) Kelly Nottingham, MS, (Member) Melissa Thomas, PhD (Secretary), and Eugene Lengerich, VMD, MS (Chair-Elect)

The 8th Annual Appalachian Translational Research Network Health Summit was hosted by the University of Kentucky Center for Clinical and Translational Science in the newly opened Bill Gatton Student Center on September 20th and 21st, 2018. This year's summit was themed "Addressing Health Disparities through Collaborative Research". Nearly 150 people from eight institutions attended the two-day Summit, with 46 poster presentations. Breakout sessions and podium presentations explored a wide range of topics including opioids, cancer, environmental risks, diabetes, and fostering collaborations. To view a complete photo gallery from the event, click on the link below:

<https://www.youtube.com/watch?v=akaLSC4quZY>

Joyce E. Balls-Berry, PhD, MPE, assistant professor of epidemiology at the Mayo Clinic, delivered a keynote speech on the "Keys to Building Successful Community-Engaged Research Partnerships". To watch Dr. Balls-Berry's Keynote address, click on the following link: https://www.youtube.com/watch?v=MbHE4jO_sLU

Next year's ATRN Summit will be hosted by our partners at Ohio State University during Fall 2019. More details will be released in the next edition of the ATRN Newsletter.

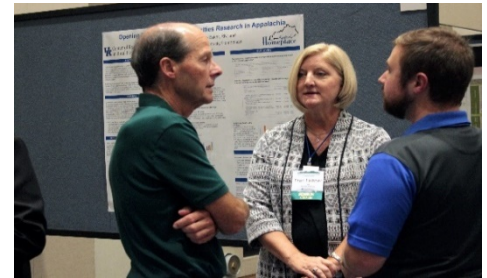
BEST STUDENT POSTER **Michael C. Petriello, PhD**

Exposure to environmental pollutants may be an independent risk factor for developing cardiometabolic diseases such as atherosclerosis. In collaboration with researchers within the ATRN, UK-Center for Clinical and Translational Science (CCTS), UK-Center for Appalachian Research in Environmental Sciences (CARES), and UK cardiovascular research groups, we examined associations between a class of persistent pollutants known as per- and polyfluoroalkyl substances (PFAS) with cholesterol levels in residents of Kentucky undergoing a lifestyle intervention study. We determined that PFAS levels were positively associated with total cholesterol levels, and this association may be dependent on the effectiveness of the intervention. "Attending the ATRN Summit was an excellent opportunity to see how bench-top science, research translation, and community engagement efforts are working together to tackle some of the most devastating and timely issues facing our Appalachian communities", said Petriello.



BEST COMMUNITY POSTER **Fran Feltner, PhD**

Dr. Fran Feltner, Director of the UK Center of Excellence in Rural Health (CERH) in Hazard, KY, and principal investigator of Kentucky Homeplace, presented a poster titled, "Opening Doors for Health Disparities Research in Appalachia". Rural Appalachian communities in eastern Kentucky experience some of the nation's most severe health disparities and barriers to health care. Community-based research can be an effective way to address health disparities and promote equitable access to care by identifying problems and sharing workable solutions. However, significant challenges exist for successful recruitment and retention of research participants because rural Appalachian populations can be difficult to reach. Feltner's poster showed how the Community Health Worker (CHW) model increases community participation in research. As members and residents of the communities in which they work, CHWs are well-positioned to facilitate communication between providers and patients to clarify cultural practices, educate community members about appropriate use of health care and social service systems, and educate the health and social service systems about community needs and perspectives. Outcomes of community-based research studies indicate that CHWs are effective members of research teams for health disparities research; CHWs are effective in identifying, recruiting, and retaining underserved and hard to reach populations; CHWs are effective in delivering research interventions to underserved and hard to reach populations and CHWs are effective in delivering evidence-based education to improve health outcomes in underserved and hard to reach populations.



BEST COMMUNITY POSTER **Beth Bowling, RN** Beth Bowling, a rural project manager at

the UK Center of Excellence in Rural Health (CERH) in Hazard, KY, presented a poster on the Community Leadership Institute of Kentucky (CLIK). CLIK, now in its fifth year, is designed to enhance the capacity for community-based health disparities research and is implemented through a partnership of the UK CERH, UK CCTS and the Kentucky Office of Rural Health (KORH). "The CLIK poster presentation informed attendees about the CLIK training model and showcased the 30 CLIK graduates and the important work they are doing to address health disparities in communities all across the Appalachian region of Kentucky," said Bowling, who has served as the CLIK project manager since its inception in 2014. "The poster judges at the ATRN Conference were very engaged and the feedback they provided will be beneficial to the institute as we continue to grow." Co-authors of the CLIK poster included Fran Feltner, PhD, director of the UK CERH, Ernie Scott, BA, director of the KORH, Gia Mudd-Martin, PhD, MPH, RN, FAHA, director of the UK CCTS Community Engagement and Research Core and Nancy Schoenberg, PhD, the founding director of CLIK.



BEST FACULTY POSTER **Tehseen Sarwar, M.D.**

Presentation Title: Alkaline Phosphatase Isoenzymes: Novel Biomarkers for Sepsis Prognosis in the Ruby Hospital Emergency Department. Dr. Sarwar could not be reached for comment.

WHERE CAMPUS AND COMMUNITY CONNECT...IN AMISH COUNTRY



Photo taken from the biennial National Amish Health Care Conference, in Ohio

When Melissa Thomas, PhD, decided to switch careers from health care to academia as assistant professor in the Department of Family Medicine at the Ohio University Heritage College of Osteopathic Medicine in Athens, Ohio, she knew she would be carrying two decades' worth of partnerships and community relationships that all centered on one common goal: reducing the burden of cancer in rural and Appalachian regions. Key to her research and outreach initiatives was the success of a community-led nonprofit organization she founded in 2011 called the Center for Appalachia Research in Cancer Education (or CARE), which has created an Amish and Mennonite breast cancer program called Project Hoffnung (meaning "hope" in German).

Because Ohio is home to two of the world's largest Amish settlements and dozens of smaller communities, Dr. Thomas has partnered with state and local health care and public health agencies, universities, local businesses and community members to address key cancer-related issues identified by Amish and Mennonite communities. After developing a cultural competency program for local and state hospitals and agencies, the team decided to host a national health care conference to showcase best practices in communication, access, design and delivery. The 2017 conference hosted representatives from ten states and Canada. A 2019 conference will be held August 1-2 to educate medical students and faculty not just about Amish health care and best practices but also best practices in community engagement initiatives. More details can be found at <http://appalcare.org/2017-conference/>

UPDATES FROM THE UNIVERSITY OF KENTUCKY

CALL FOR PROPOSALS

**The 10th Annual UK Appalachian Research Symposium and
Arts Showcase
March 2, 2019
William T. Young Library | University of Kentucky**



In 2009, the UK Graduate Appalachian Research Community (GARC) worked to foster a supportive community in which students, community members, and academics from various disciplines and backgrounds could learn from one another's findings, discuss research obstacles and successes, and identify opportunities for collaboration. As an official University of Kentucky organization, GARC has worked tirelessly to promote an interdisciplinary dialogue on Appalachian Research in Kentucky and beyond.

In recognition of the 10th anniversary of GARC, this year's Symposium theme, "**GARC at 10: Interdisciplinary Dialogues on Appalachian Research and Community**", seeks to reconcile the past and future of the Appalachian region and scholarship. Particularly, we seek to explore the complex relationship among interdisciplinary scholarship, participation, and advocacy in the Appalachian region while exploring possibilities for an engaged, collaborative future. Building upon the history of the symposium we invite participants from a variety of disciplinary, practice, and life-experiences backgrounds to consider our shared interest and understandings of Appalachia. We are particularly interested in fostering an opportunity for interdisciplinary dialogue among emerging Appalachian undergraduate and graduate scholars, activities, and community members.

The Symposium is open to all undergraduate and graduate students of all disciplines from all colleges and universities doing work pertaining to Appalachia. **Registration is free for both presenters and registered attendees.** The Symposium is intended to foster a supportive community of emerging scholars and provide an opportunity for students to network, collaborate, learn from each other's findings, and explore issues relevant to Appalachian communities. Students without previous presentation experience, undergraduate students, those students seeking feedback on ongoing research, and students creating performance or visual artworks related to Appalachia are strongly encouraged to participate.

For registration and abstract submission, please visit: <https://tinyurl.com/GARC2019>

Abstract Submission Deadline: Friday, February 15th, 2019 (5pm)

Registration Deadline: Friday, February 22nd, 2019 (5pm)

BUILDING A BRIDGE BETWEEN COMMUNITY AND UNIVERSITY



The Ohio University Research Division Center for Campus & Community Engagement (CCCE) and individuals representing community health programs, department of social & public Health, College of Education, and primary care research Initiatives created a workshop series to foster the development and support of community-engaged research. Designed as a yearlong, three-part pilot program, the series has focused on defining community-engaged research, identifying opportunities and challenges, and building a platform to initiate open dialogue between the community and university.

To ensure that attendees felt supported and comfortable, the workshops were formatted as followed: university faculty and staff only (held 10/5/2018); community members only (held 1/17/2019); and combined community-university participants (scheduled for late spring 2019). Each of these workshops highlighted the definition of community-engaged research; examples of existing successful collaborations; and an opportunity for participants to provide insights and input regarding barriers, challenges and opportunities for future collaboration. This collaborative effort will contribute to Ohio University's President Duane Nellis' strategic initiative to "Build a University Engagement Ecosystem".

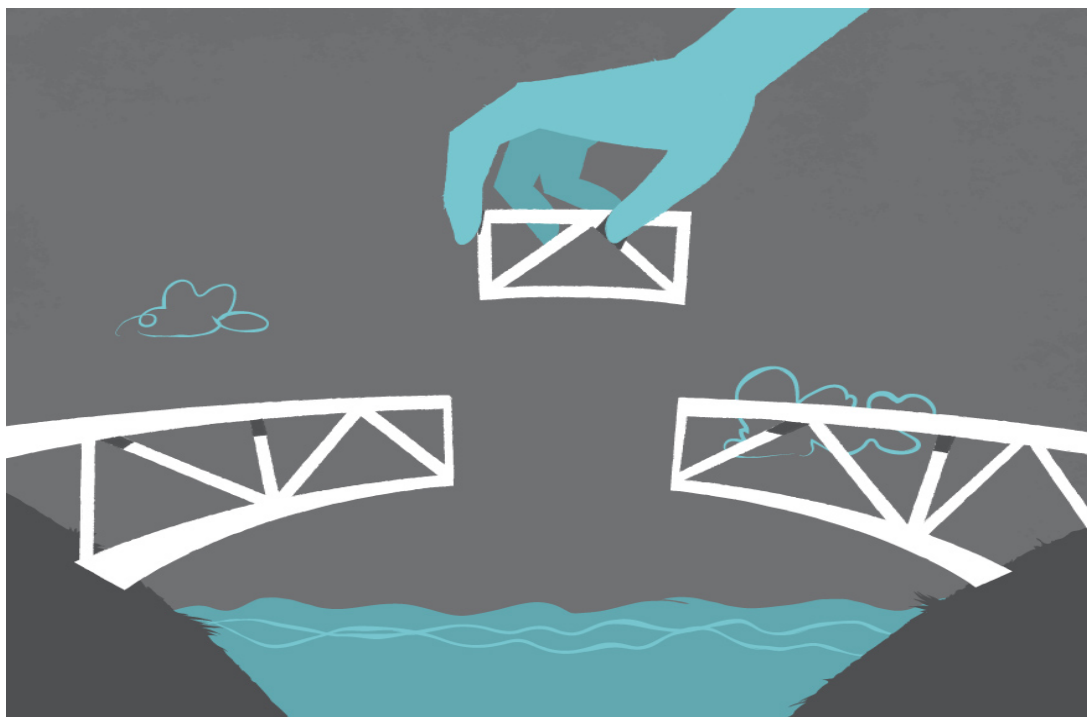


Photo taken from <https://www.hurca.com/building-the-bridge/>

REQUEST FOR APPLICATIONS

2019 UK Collaborative Pilot Project Awards

Participating Institutions:

University of Kentucky

West Virginia University

Wake Forest University

Marshall University

Participating UK Centers:

Barnstable Brown Diabetes and Obesity Center

Markey Cancer Center

Sanders Brown Center on Aging

Spinal Cord and Brain Injury Research Center

Issue Date: January 16th, 2019

LOI Due Date: February 17th, 2019

The UK Center for Clinical and Translational Science (CCTS) is now accepting applications for Pilot Projects. The purpose of this funding mechanism is to provide a new opportunity and resources to support innovative, collaborative research relevant to the health challenges and disparities faced by the nation. The funding for these pilot studies is derived from the CCTS program in partnership with other Universities in the Appalachian Translational Research Network (ATRN). This award will give priority to studies with a disease focus, community engagement, or with collaboration between UK and other universities.

For RFA details and instructions, click here:

<https://www.ccts.uky.edu/funding-opportunities/2019-uk-collaborative-rfa>

UPCOMING EVENTS

Planning to go to the annual ACTS meeting in Washington DC?

K, T and other trainees from our CTSI/ATRN partnership are invited to attend a networking reception with other scholars interested in translational research.

SAVE THE DATE

Thursday
March 7
7 - 9 p.m.

Marriott Wardman Hotel
(Room TBA)

More information to come.

Contact Lorah Dorn with questions:
dun@psu.edu

 **PennState**
Clinical and Translational
Science Institute

Would you like to submit content for the ATRN Newsletter?

Please email the representatives below at each partnering institution:

Newsletter Editor:

Ashley Hall agtayl3@uky.edu

ATRN Communications Group

Ian Moore imoore3@hsc.wvu.edu

Beverly Stringer Beverly.stringer@osumc.edu

Sheanna Smith smith566@marshall.edu

Sarah Mann sarah.mann@osumc.edu

Kelly Nottingham nottingk@ohio.edu

Matthew Solovey msolovey@pennstatehealth.psu.edu

Lori Crosby lori.crosby@cchmc.org

Jeff M. Grever Jeff.Grever@osumc.edu